

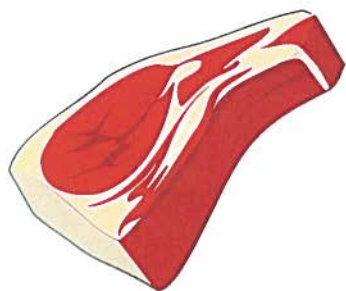
# MEAT RAFFLE

to benefit

## Bryan M. Lawrence Foundation

### SATURDAY, NOVEMBER 20TH

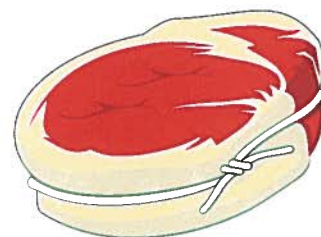
### 7:00 PM (doors open at 6:15 PM)



### Dom Polski Post

576 Oliver St.

N. Tonawanda, NY



- \$5.00 admission
- Tables of 8 can be reserved in advance for \$30.00
- Beer, Pop, Coffee, Sandwiches & Snacks will be provided
- Chinese Auction & 50/50 Splits
- Tickets available at the door or in advance at Sports Collectors Corner in the Walden Galleria and Fashion Outlets NF or at the Foundation address.



**Bryan M. Lawrence Foundation**  
Assisting Families Fighting Childhood Cancer  
90 Findlay Ave. • Tonawanda, NY 14150  
Phone: (716) 465-9244  
[www.Lawrence-Foundation.org](http://www.Lawrence-Foundation.org)